

Deloitte.

BRC



# Customs Clearance Checklist

Deloitte | British Retail Consortium Members | 2021



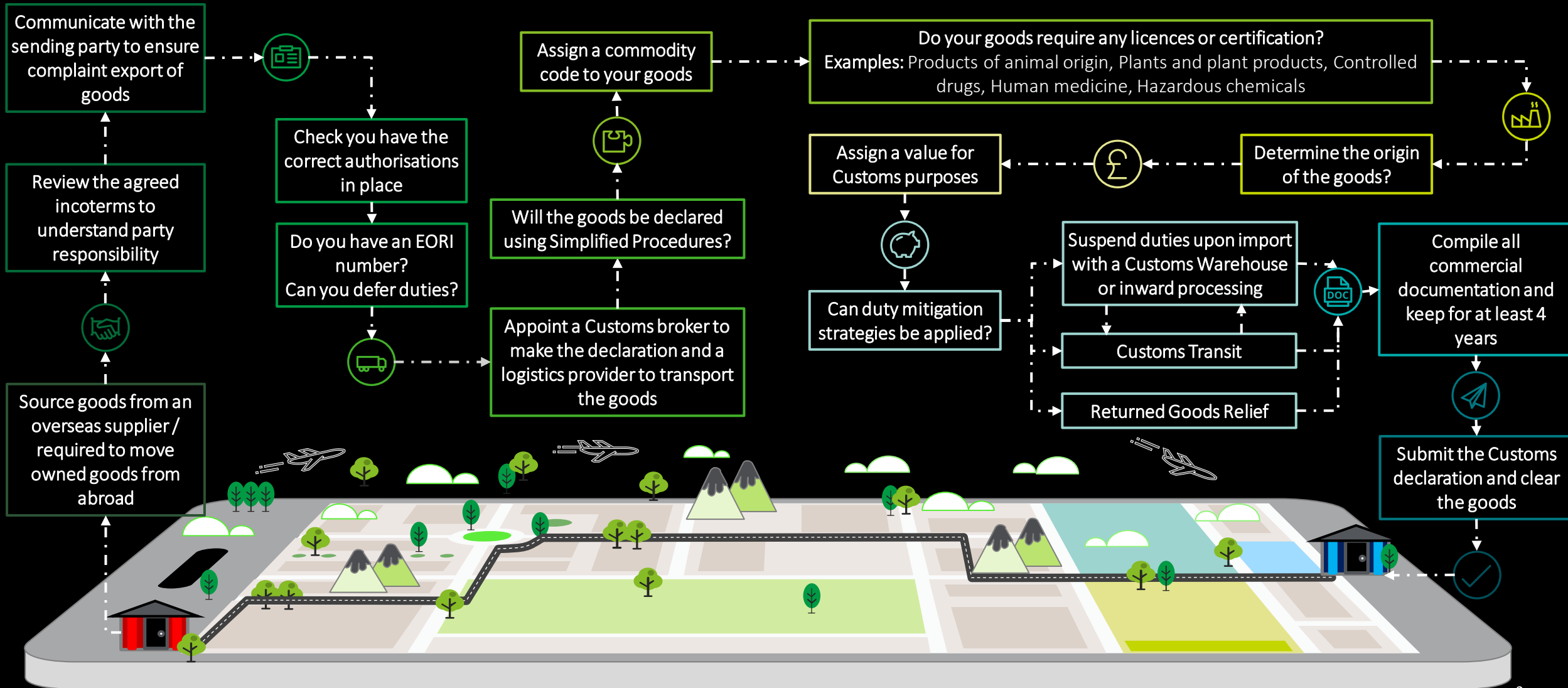
MAKING AN  
IMPACT THAT  
MATTERS

*since 1845*

# Importing goods into the UK

## Checklist for consideration

As a result of the UK leaving the Customs Union over 250,000 traders will be required to interact with government departments in relation to the international trade in goods for the first time. For non-controlled goods Customs declarations are required to be submitted on in-bound movements of goods from the EU on and after 1 July 2021. The below sets out an indicative step by step process a trader should follow when required to submit a Customs declaration to HMRC.





# Customs Support for British Retail Consortium Members

- From 1 January 2021, **businesses need to make customs declarations** when moving goods from the EU to the UK.
- The UK government estimates an **additional 215 million declarations** will be required each year.
- Deloitte's customs intermediary business, Global Trade Bureau, will **prepare and submit over 250,000 customs declarations** for importers from 1 January 2021.
- We are pleased to offer a customs declaration service to British Retail Consortium Members **applying a 15% discount against our standard declaration fees.**
- If you need help with customs declarations and want to access the special arrangements we have for BRC members, please contact one of the team:

---

**Caroline Barraclough**

**Partner & Global Trade Leader**



Email: [cbarraclough@deloitte.co.uk](mailto:cbarraclough@deloitte.co.uk)

Telephone: 020 7007 9287

---

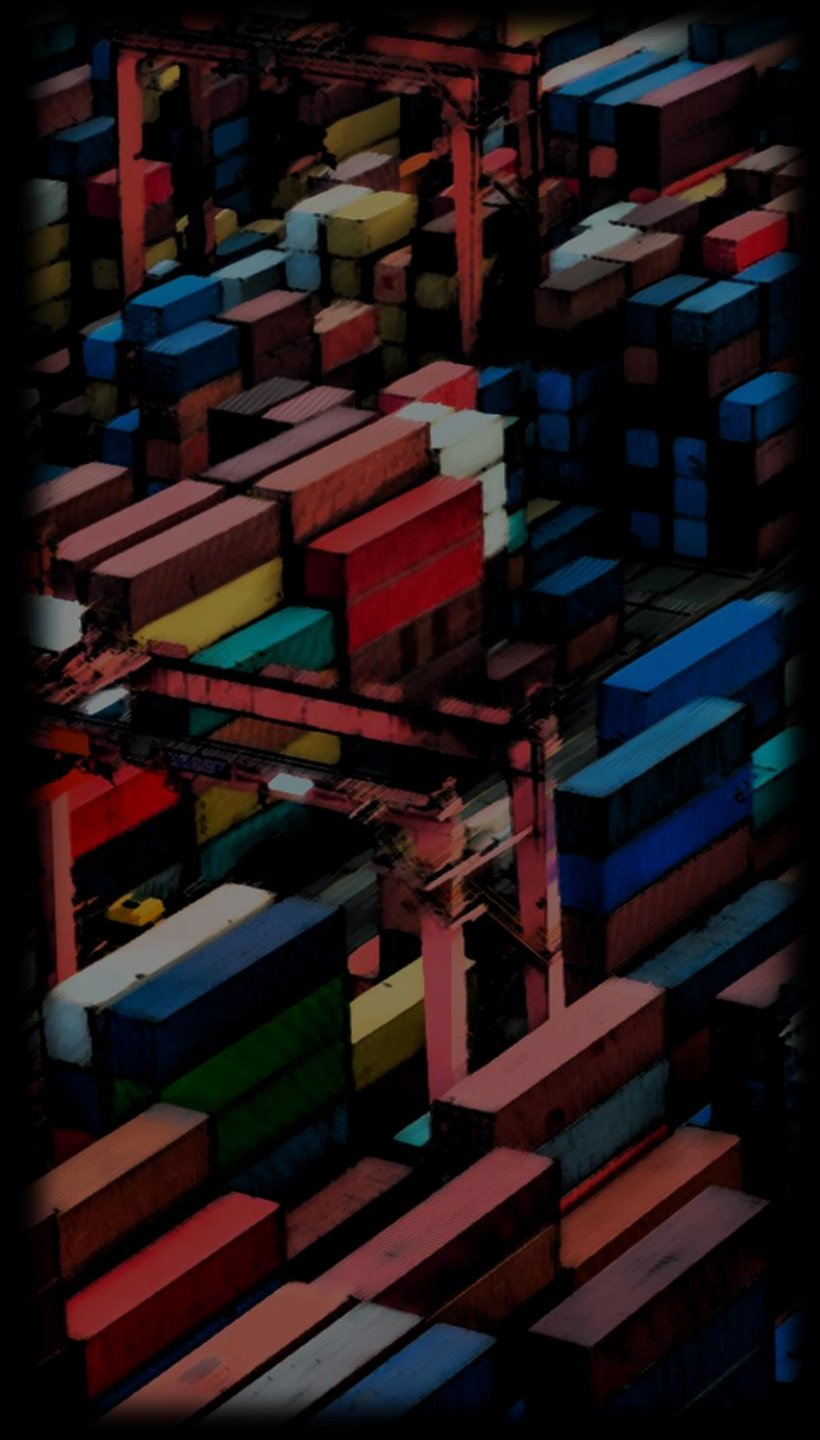
**Sam Kiely**

**Global Trade Associate Director**



Email: [skiely@deloitte.co.uk](mailto:skiely@deloitte.co.uk)

Telephone: 020 7007 2886



# How we can help

We help our clients prepare import declarations, export declarations and manage special customs procedures such as moving controlled goods including animal products and also customs compliance connected with moving goods in and out of customs warehouses. Here are a few of the things that we help our clients with....

## Preparation and Submission of Simplified Frontier Declarations

We complete the initial simplified customs declaration, enabling your goods to pass through the UK border, when they arrive. If you import "controlled goods", we also complete the government declarations that are required

## Customs Procedures

If your supply chain utilises a Customs Procedure, we can manage the background processes for you. For example, we can process all entries and removals from a Customs Warehouse and complete daily stock-reconciliation checks.

## Exports

We can also prepare and submit your export declarations to HMRC.



## Generation of Unique Consignment References

We assign your shipments with a Unique Consignment Reference to be shared with customs authorities, so they can identify your shipments as they cross borders.



## Preparation and Submission of Supplementary Customs Declarations

Utilising industry leading technology, we then create and submit the subsequent supplementary customs declarations.



## Dashboard Reporting

Our dashboard reporting provides you with real-time visualisations and analytics of your customs processes, as well as our own performance.





This publication has been written in general terms and we recommend that you obtain professional advice before acting or refraining from action on any of the contents of this publication. Deloitte LLP accepts no liability for any loss occasioned to any person acting or refraining from action as a result of any material in this publication.

Deloitte LLP is a limited liability partnership registered in England and Wales with registered number OC303675 and its registered office at 1 New Street Square, London, EC4A 3HQ, United Kingdom.

Deloitte LLP is the United Kingdom affiliate of Deloitte NSE LLP, a member firm of Deloitte Touche Tohmatsu Limited, a UK private company limited by guarantee ("DTTL"). DTTL and each of its member firms are legally separate and independent entities. DTTL and Deloitte NSE LLP do not provide services to clients. Please see [www.deloitte.com/about](http://www.deloitte.com/about) to learn more about our global network of member firms.

© 2021 Deloitte LLP. All rights reserved.